

Three-wheel and Four-wheel MGA Electric Forklift

Flexible, Quiet, Easy to drive, Efficient

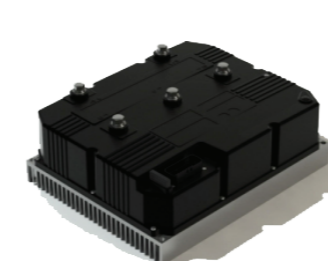


MGA Four-wheel Electric Forklift



MGA Three-wheel Electric Forklift

- **Wholly intergrated frame:** Its intensity and safety are high.
- **Electricity controller:** 48 Voltage System.
- **Electric motor and front bridge:** Electric motor and front bridge are located in parallel.
- **Increased transmission efficiency.**
- **Battery:** The narrow-shaped design makes the size smaller.
- **Universal joint device:** The universal joint device connects the hydraulic steering device and the steering wheel, reducing the discomfort caused by shaking.
- **Wonderful flexibility:** Compact design of the body and stable inductive steering system keeps the triple electrical forklifts very little turning radius.
- **Controller, motor & hydraulic system:** All specifications can be changed by adjusting the compact processing unit, ensuring the trucks perform tidy.
- **Comfortable and controllable:** We adopt man-machine engineering theory. The dashboard is clear at a glance. We make a comfortable driving room with the best efficiency.



Zapi Controller (Italy)



Motor + Tranmission + Driving aisle



Battery



Battery Charger

The AC motors provide operator with more concitive and smooth response. There is no more maintenance for AC motors, which extends the service lift of the motors.

MODEL: MGA-1.5T					CAPACITY		
MAX. LIFT HEIGHT (mm)	OVERALL HEIGHT				LOAD CENTER 500mm		
	LOWER. (mm)	EXTEND. (mm)	FREE LIFT (mm)	TILT (deg) F B	WITHOUT SIDESHIFT (kg)	WITH SIDESHIFT (kg)	
2 STAGE							
3000	2100	4220	0	6 12	1500	1380	
3300	2150	4520	0	6 12	1500	1380	
3500	2250	4720	0	6 12	1500	1380	
3700	2400	4920	0	6 6	1500	1380	
4000	2550	5220	0	6 6	1500	1380	
2 STAGE FULL FREE							
3000	2100	4220	1500	6 12	1500	1380	
3300	2150	4520	1650	6 12	1500	1380	
3500	2250	4720	1750	6 12	1500	1380	
3700	2400	4920	1850	6 6	1500	1380	
4000	2550	5220	2000	6 6	1500	1380	
3 STAGE FULL FREE							
4500	2100	5719	1500	6 6	1300	1190	
4800	2150	6020	1600	6 6	1250	1140	
5000	2250	6219	1650	6 6	1200	1000	
5500	2433	6719	1833	6 6	800	720	
6000	2650	7219	2000	6 6	600	530	

MODEL: MGA-2.5T					CAPACITY			
MAX. LIFT HEIGHT (mm)	OVERALL HEIGHT				LOAD CENTER 500mm			
	LOWER. (mm)	EXTEND. (mm)	FREE LIFT (mm)	TILT (deg) F B	WITHOUT SIDESHIFT (kg)	WITH SIDESHIFT (kg)		
2 STAGE								
3000	2100	4220	0	6 12	2500	2500	2320	2320
3300	2150	4520	0	6 12	2500	2500	2320	2320
3500	2250	4720	0	6 12	2500	2500	2320	2320
3700	2400	4920	0	6 6	2500	2500	2320	2320
4000	2550	5220	0	6 6	2500	2500	2320	2320
2 STAGE FULL FREE								
3000	2100	4220	1500	6 12	2500	2500	2320	2320
3300	2150	4520	1650	6 12	2500	2500	2320	2320
3500	2250	4720	1750	6 12	2500	2500	2320	2320
3700	2400	4920	1850	6 6	2500	2500	2320	2320
4000	2550	5220	2000	6 6	2500	2500	2320	2320
3 STAGE FULL FREE								
4500	2100	5720	1500	6 6	2100	2350	1950	2180
4800	2150	6020	1600	6 6	2000	2300	1850	2130
5000	2250	6220	1650	6 6	1500	2300	1380	2130
5500	2433	6720	1833	6 6	1350	2100	1250	1950
6000	2650	7220	2000	6 6	1000	1800	920	1660

MODEL: MGA-3.5T					CAPACITY			
MAX. LIFT HEIGHT (mm)	OVERALL HEIGHT				LOAD CENTER 500mm			
	LOWER. (mm)	EXTEND. (mm)	FREE LIFT (mm)	TILT (deg) F B	WITHOUT SIDESHIFT (kg)	WITH SIDESHIFT (kg)		
2 STAGE								
3000	2100	4220	0	6 12	3500	3500	3240	3240
3300	2150	4520	0	6 12	3500	3500	3240	3240
3500	2250	4720	0	6 12	3500	3500	3240	3240
3700	2400	4920	0	6 6	3500	3500	3240	3240
4000	2550	5220	0	6 6	3500	3500	3240	3240
2 STAGE FULL FREE								
3000	2100	4220	1500	6 12	3500	3500	3240	3240
3300	2150	4520	1650	6 12	3500	3500	3240	3240
3500	2250	4720	1750	6 12	3500	3500	3240	3240
3700	2400	4920	1850	6 6	3500	3500	3240	3240
4000	2550	5220	2000	6 6	3500	3500	3240	3240
3 STAGE FULL FREE								
4500	2100	5720	1500	6 6	2800	2900	2560	2683
4800	2150	6020	1600	6 6	2750	2900	2520	2670
5000	2250	6220	1650	6 6	2400	2800	2170	2570
5500	2433	6720	1833	6 6	2000	2600	1790	2380
6000	2650	7220	2000	6 6	1600	2400	1400	2170
6500	2890	7750	2166	3 6	1000	1900		

MODEL: MGA-2.0T					CAPACITY			
MAX. LIFT HEIGHT (mm)	OVERALL HEIGHT				LOAD CENTER 500mm			
	LOWER. (mm)	EXTEND. (mm)	FREE LIFT (mm)	TILT (deg) F B	WITHOUT SIDESHIFT (kg)	WITH SIDESHIFT (kg)		
2 STAGE								
3000	2100	4220	0	6 12	2000	2000	1850	1850
3300	2150	4520	0	6 12	2000	2000	1850	1850
3500	2250	4720	0	6 12	2000	2000	1850	1850
3700	2400	4920	0	6 6	2000	2000	1850	1850
4000	2550	5220	0	6 6	2000	2000	1850	1850
2 STAGE FULL FREE								
3000	2100	4220	1500	6 12	2000	2000	1850	1850
3300	2150	4520	1650	6 12	2000	2000	1850	1850
3500	2250	4720	1750	6 12	2000	2000	1850	1850
3700	2400	4920	1850	6 6	2000	2000	1850	1850
4000	2550	5220	2000	6 6	2000	2000	1850	1850
3 STAGE FULL FREE								
4500	2100	5720	1500	6 6	1800	1850	1660	1710
4800	2150	6020	1600	6 6	1550	1750	1410	1620
5000	2250	6220	1650	6 6	1400	1750	1290	1620
5500	2433	6720	1833	6 6	1200	1700	1100	1570
6000	2650	7220	2000	6 6	850	1600	770	1470

MODEL: MGA-3.0T					CAPACITY			
MAX. LIFT HEIGHT (mm)	OVERALL HEIGHT				LOAD CENTER 500mm			
	LOWER. (mm)	EXTEND. (mm)	FREE LIFT (mm)	TILT (deg) F B	WITHOUT SIDESHIFT (kg)	WITH SIDESHIFT (kg)		
2 STAGE								
3000	2100	4220	0	6 12	3000	3000	2770	2770
3300	2150	4520	0	6 12	3000	3000	2770	2770
3500	2250	4720	0	6 12	3000	3000	2770	2770
3700	2400	4920	0	6 6	3000	3000	2770	2770
4000	2550	5220	0	6 6	3000	3000	2770	2770
2 STAGE FULL FREE								
3000	2100	4220	1500	6 12	3000	3000	2770	2770
3300	2150	4520	1650	6 12	3000	3000	2770	2770
3500	2250	4720	1750	6 12	3000	3000	2770	2770
3700	2400	4920	1850	6 6	3000	3000	2770	2770
4000	2550	5220	2000	6 6	3000	3000	2770	2770
3 STAGE FULL FREE								
4500	2100	5720	1500	6 6	2800	2900	2560	2683
4800	2150	6020	1600	6 6	2400	2850	2180	2630
5000	2250	6220	1650	6 6	2350	2800	2170	2590
5500	2433	6720	1833	6 6	1900	2600	1750	2400
6000	2650	7220	2000	6 6	1500	2300	1370	2120
6500	2890	7750	2166	3 6	1000	1900		

MAST SPECIFICATION Electric Forklift

MGA FORKLIFT INC. (USA)

Address: 8450 Garvey Avenue Suite 230, Rosemead, CA91770, USA.
Web: www.mgaforklift.com Mail: sales@mgaforklift.com

MGA HEAVY MACHINERY ASIA PTE LTD (SINGAPORE)

Address: 50 Tagore Lane #05-07 Entrepreneur Centre Singapore 787494
Tel: (+65) 6511 4583 Fax: (+65) 6511 2969
Web: www.mgahmasia.com Mail: sales@mgahmasia.com

FACTORY: MGA VIETNAM CO., LTD.

Address: 1/2/5 Giang Van Minh, An Phu Ward, District 2, HCMC, Vietnam
Tel: (+84-8) 3519 4286-87-88 Fax: (+84-8) 3519 4289
Web: www.mgavietnam.com Mail: sales@mgavietnam.com

For more information on our products, please visit